

What is an energy community

- An energy community is an aggregate of subjects (mainly consumers) who associate with the intention of pooling resources to organize them for the benefit of sustainable local development with economic and social benefits for them and for the territory in which they live and operate
- Energy producers and energy companies can participate as partners and members can support production initiatives
- EPA will work in such a way that the members of the energy community will be able to consume sustainable energy produced locally in agreement with EPA with a benefit for the environment and for their energy expenditure
- It is part of the project not only to produce energy, but also to improve efficiency, land sustainability, and sustainable uses (e.g., sustainable mobility)
- The energy community manages and coordinates activities in a way that extracts economic benefits that it passes on to its members

The Law

- The energy community is an initiative introduced on a large scale by recent European directives (Directive (EU) 2018/2001, Directive (EU) 2019/944)
- In Italy, art. 42-bis DL 162/19 (Law n. 8/2020) introduces on an experimental basis and in line with the directives particular forms of aggregation with the possibility of access to specific economic benefits. To do this, end customers, producers and self-consumers must be, alternatively:
 - *present in the same condominium to act in collective form*
 - *connected to the low voltage lines starting from a medium/low voltage transformation cabin to organize themselves in the form of energy community*
- An energy community can still be organized even if the above conditions are not met: creating communities will still allow access to many other benefits

What is Energy People Alliance

- To constitute an energy community, it is necessary to set up a legal entity whose primary purpose is not to make profits, but to create benefits for its members

Energy People Alliance (EPA) is a nonprofit energy community organization.

EPA organizes its members (individuals, businesses, and local authorities, including municipal governments) in the form of an energy community with the goal of pursuing the greatest possible benefit for its members

EPA manages relationships with potential partners (energy producers, energy companies) to pursue the purposes of benefit to its members

EPA also acts as an association of other energy communities for the promotion and development of the energy community tool

Energy People Alliance is not

Energy People Alliance (EPA) IS NOT a technology solutions vendor, so its interest is not to build systems, sell panels, or provide particular technology solutions to members

EPA IS NOT an electricity supplier whose goal is to get members to sign power purchase agreements: members will still be able to choose their own seller

EPA IS NOT a branch of any energy company or solution provider: it is organized and managed on a case-by-case basis according to the needs and methods that maximize the benefit to members

Model

ENERGY
PEOPLE
ALLIANCE
COMUNITÀ ENERGETICA



Come opera EPA

EPA is the tool to pool all the variables by organizing and managing them under the rules of an energy community.

EPA can acquire the availability of facilities for the benefit of users by remunerating producers

EPA brings production to market, checks for supports, benefits, and incentives, and pours them back to members

Directly

Through energy sales companies interested in the initiatives

ENERGY PEOPLE ALLIANCE
COMUNITÀ ENERGETICA

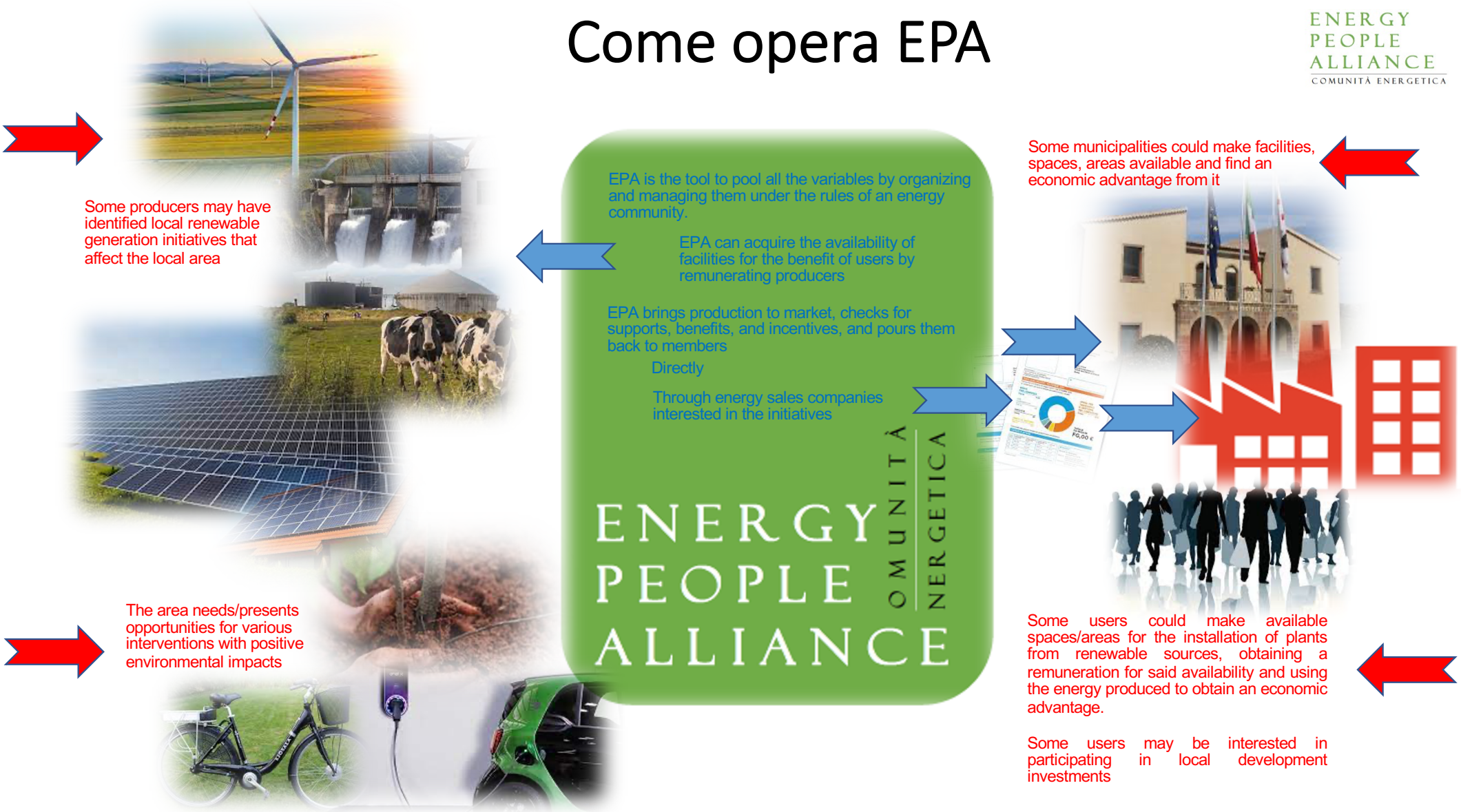
Some producers may have identified local renewable generation initiatives that affect the local area

Some municipalities could make facilities, spaces, areas available and find an economic advantage from it

The area needs/presents opportunities for various interventions with positive environmental impacts

Some users could make available spaces/areas for the installation of plants from renewable sources, obtaining a remuneration for said availability and using the energy produced to obtain an economic advantage.

Some users may be interested in participating in local development investments



TO DO

- IT IS NOT NECESSARY TO JOIN NOW
- If you are thinking of creating an energy community in your area or would like to explore the possibility of creating or joining an energy community, take contact with EPA writing to info@epalliance.eu . You can also do it if you are a producer or an energy company.
- We will check together, free of charge and without obligation, if the conditions exist to create an advantage for you and other members in your area by joining an energy community.
- If necessary, then you will be free to join. Remember that the European Directives state that participation in an energy community is free and voluntary and EPA intends to respect this principle. The provision of your data authorizes EPA to use them only for the above purposes and they will not be transferred to anyone for further action of any kind.